



WWW.ML1INC.COM

# ENSURING EQUITABLE CARE DELIVERY





# WHO WE ARE

ML1 is a global manufacturing technology company committed to bridging gaps and addressing inequities in the healthcare supply chain, particularly within underserved communities. We believe that maintaining healthy skin, our largest organ, is a fundamental human right, and access to proper skin moisturization is essential for overall well-being.

**ML1**



# THE CHALLENGE

Humans taking lots of medication, experiencing stress due to illness, and/or those with curly hair need extra doses of moisture to care for their hair & skin. Furthermore additional tools like wide tooth combs, bonnets, and spray bottles make the job easier for those providing care.

ML1



A photograph of a male doctor with a beard and mustache, wearing blue scrubs and a green stethoscope. He is smiling warmly and holding the hand of an elderly patient with white hair. The patient is seen from the back/side, wearing a blue hospital gown. The background is a blurred clinical setting with a shelf and a potted plant. The overall mood is caring and professional.

# **SPECIALTY CARE PRODUCTS**

**ML1**



# Hair Glue Remover



Gentle and Free of Potentially Harmful Ingredients



Hypoallergenic and Allergy-Free Perfume



Designed for Vulnerable & Sensitive Skin



All Recyclable Packaging





# Lip Balm



Gentle and Free of Potentially Harmful Ingredients



Hypoallergenic and Allergy-Free Perfume



Designed for Vulnerable & Sensitive Skin



All Recyclable Packaging





# Cocoa Butter Cream



Gentle and Free of Potentially Harmful Ingredients



Hypoallergenic and Allergy-Free Perfume



Designed for Vulnerable & Sensitive Skin



All Recyclable Packaging





# SKIN CARE PRODUCTS

Moisture 1 is the optimal choice for hydration and moisture care for skin. Our products are free of parabens, PEGS, and sulfates, which can upset the endocrine system, and are available fragrance-free, with special orders for fragrance accepted. Our Moisture Care system is effective especially those that are sensitive and dry skin types.

# ML1



Gentle and Free of Potentially Harmful Ingredients



Hypoallergenic and Allergy-Free Perfume



Designed for Vulnerable & Sensitive Skin



All Recyclable Packaging





Shampoo



Conditioner



Face & Body Wash



Body Lotion



Deodorant



Lip Balm



Cocoa Butter Cream



Hair Glue Remover

# HAIR CARE PRODUCTS

Moisture Love is a high-quality haircare line formulated specifically for curly hair. Our Hydralure Technology infuses moisture deep into the hair, which is reactivated with a steamy shower, for 3+ days of manageability. All of our vegan and cruelty-free products are formulated without parabens, PEGs, and sulfates, using only premium ingredients.



## MOISTURE LOVE®



Gentle and Free of Potentially  
Harmful Ingredients



Hypoallergenic and  
Allergy-Free Perfume



Designed for Vulnerable  
& Sensitive Skin



All Recyclable  
Packaging



## Hair Care Products



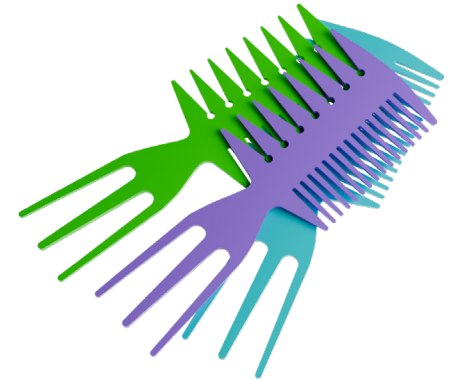
Silk Scarf



Satin Lined Bonnet



Satin Lined Shower Cap



Detangling Comb



Moisture & Style Cream



Replenishing Conditioner



Hydration Shampoo



Leave-in Conditioning Serum



Finishing Oil



# BABY CARE PRODUCTS

Kindred spirits is a fragrance-free, tear-free, and hypoallergenic baby wash and moisturizer, specially formulated to be gentle on a newborn's sensitive skin and hair. Made with premium ingredients and free of parabens, PEGs, and sulfates, Kindred spirits provides the special care your baby's delicate skin needs.

ML1





Baby Hair Brush



Baby Blanket



Wet Wipes



Baby Cotton Bodysuit



Hair & Body Wash



Hair & Body Cream



WWW.ML1INC.COM



## PRIVATE LABEL

At ML1 Inc., we offer healthcare systems the opportunity to provide high-quality, private-label personal care products for their hospitals. From patient skincare to staff hygiene solutions, we manage the entire private-label manufacturing process to ensure your hospital's brand delivers excellence at every touchpoint.

**With full control over quality standards, production capabilities, and compliance requirements, our team guides you through key considerations such as:**

- Production technology that meets industry best practices
- Certification standards to ensure regulatory compliance
- Minimum order quantities that align with your hospital's needs
- Flexible lead times to support seamless inventory management

Leveraging our extensive network and expertise, we help you introduce private-label solutions that not only meet the highest standards but also support your hospital's business goals. Let's discuss how ML1 Inc. can enhance your patient and staff care experience with customized, high-quality products.

**Would you like to schedule a consultation to explore the best solutions for your facility?**



# CONSULTING

At ML1 Inc., our mission is to bridge gaps and address inequities in the healthcare supply chain by providing strategic solutions that enhance access to quality care. Through our deep industry expertise and consulting services, we help healthcare systems build resilient, diverse supply chains that meet the evolving needs of their patients and staff.

## We provide strategic guidance in:



### Supply Chain Optimization

Enhancing efficiency, reducing costs, and ensuring seamless product availability.



### Diverse Supplier Partnerships

Connecting healthcare systems with high-quality, certified suppliers to drive equitable sourcing.



### Customized Sourcing Strategies

Aligning procurement with patient and operational needs for greater impact.

By prioritizing supplier diversity and strategic sourcing, we empower healthcare organizations to create more inclusive, efficient, and sustainable supply chains. Let's work together to strengthen your procurement strategy and enhance patient care.

**Schedule a consultation  
with our team today!**

Call now  
**+1 (888) 575-5685**

# CONTACT

**Jeannell Darden**



WWW.ML1INC.COM



**info@ml1inc.com**



**+1 (888) 575-5685**



**www.youtube.com/@atML1INCin.com/ml1**



**https://www.linkedin.com/ml1**



**www.ml1inc.com**